



Country Profile for Measles Elimination Philippines

Section 1. Background information (data for 2011)

| | UN World Population Prospects | WHO-UNICEF Joint Reporting Form (JRF) |
|------------------|-------------------------------|---------------------------------------|
| <1 year old | 2 298 728 | 2 525 386 |
| < 5 years old | 11 160 645 | 12 950 694 |
| < 15 years old | 33 204 289 | 36 401 644 |
| Total population | 94 852 030 | 95 931 069 |

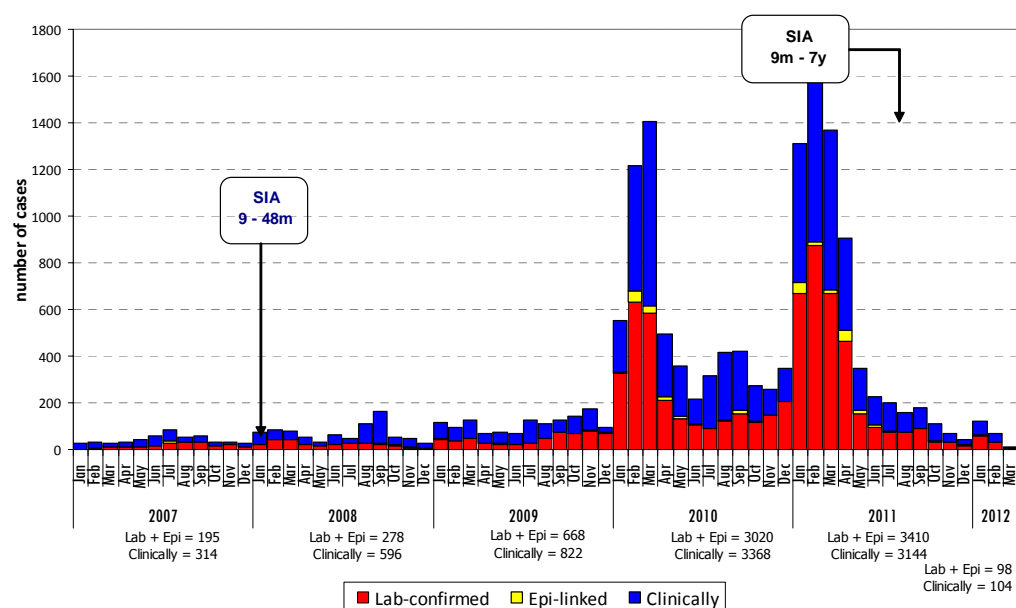


Section 2. Measles incidence and epidemiology

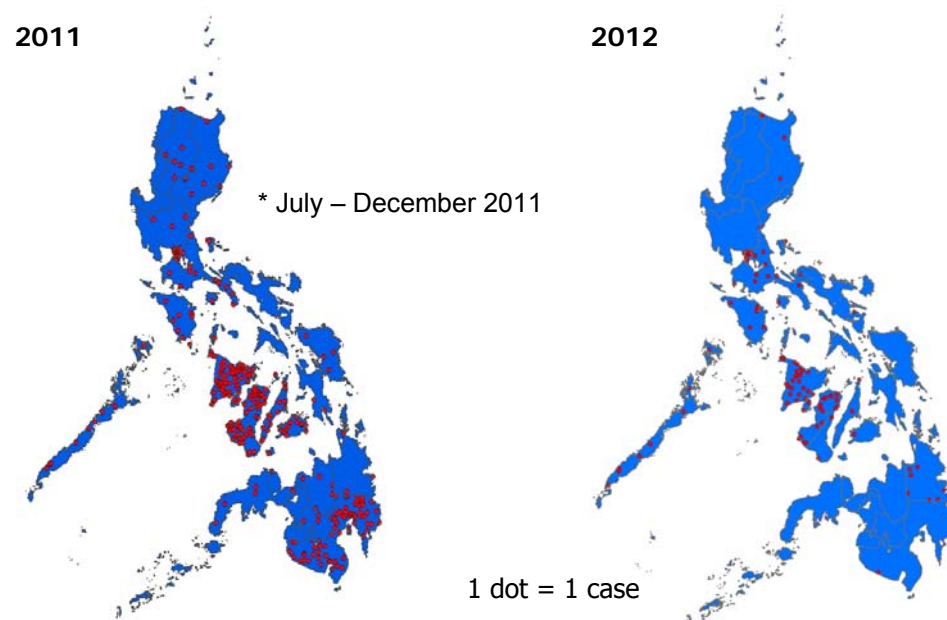
| | Suspected measles cases | Confirmed measles cases | | | | Discarded cases | Pending classification | Deaths due to measles | Measles incidence* | Detected genotypes D9 |
|--------|-------------------------|-------------------------|------------|----------|-------|-----------------|------------------------|-----------------------|--------------------|-----------------------|
| | | Lab | Epi-linked | Clinical | Total | | | | | |
| 2008 | 1581 | 262 | 16 | 596 | 874 | 707 | 0 | 8 | 9.8 | |
| 2009 | 2937 | 660 | 8 | 822 | 1490 | 1447 | 0 | 10 | 16.6 | |
| 2010 | 10 376 | 2883 | 137 | 3368 | 6388 | 3988 | 0 | 34 | 68.2 | 11 |
| 2011 | 9506 | 3239 | 171 | 3144 | 6554 | 2952 | 0 | 28 | 69.1 | 24 |
| 2012** | 572 | 92 | 6 | 108 | 206 | 176 | 190 | 1 | 8.5 | |

* per 1 million population
** Reports received through April; measles incidence is annualized

Confirmed measles cases by month of onset, 2007-2012

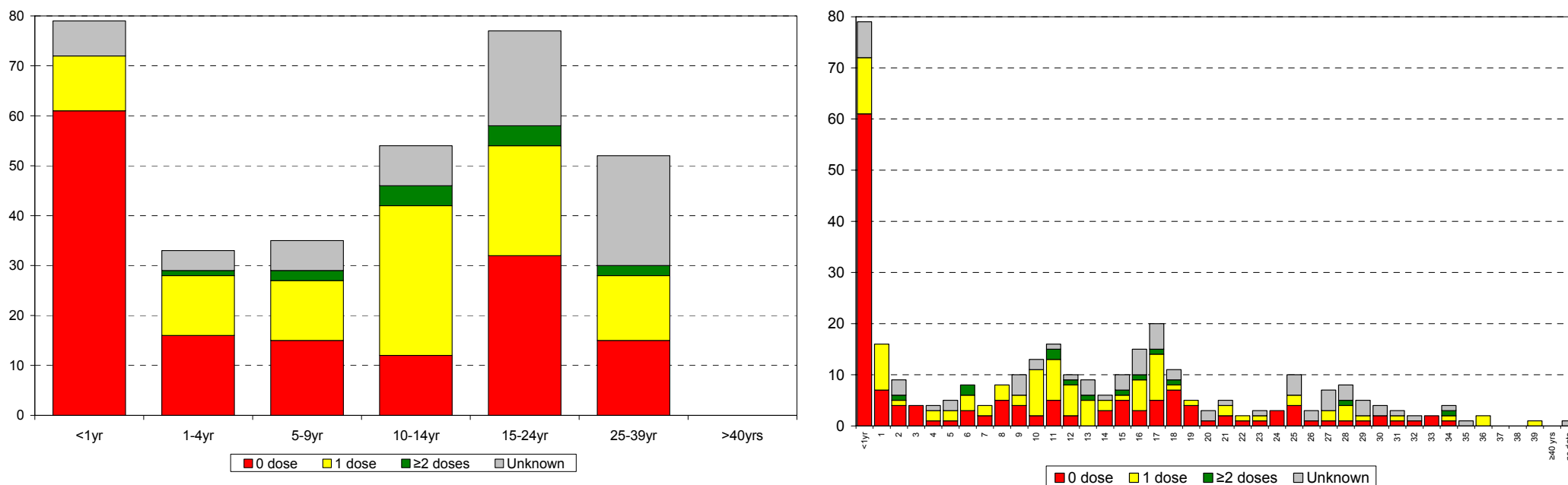


Lab-confirmed and epi-linked measles cases by region, 2011*-2012



* Dots are placed at random within the corresponding region, and might not reflect the exact location of the case.

Lab-confirmed and epi-linked measles cases, by age group and vaccination status, 2011



No. of reported exported cases from Philippines to other countries, 2011*

| Affected country | Primary cases | Genotype | | Secondary cases | Genotype | |
|------------------|---------------|----------|---------|-----------------|----------|---------|
| | | D9 | Unknown | | D9 | Unknown |
| Australia | 5 | 2 | 3 | 3 | 3 | |
| Japan | 10 | 6 | 4 | 7 | 6 | 1 |
| Singapore | 3 | | 3 | 0 | | |

* Countries reporting importation include Australia, Japan and Singapore.



Country Profile for Measles Elimination Philippines

Section 3. Surveillance and laboratory performance

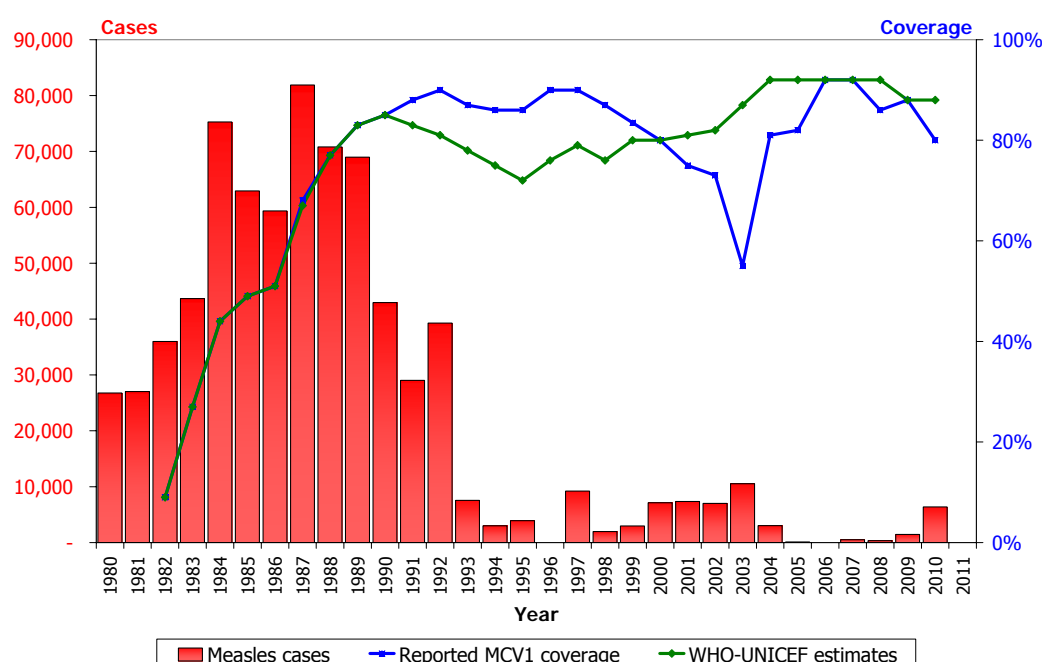
| | Discarded measles rate* | Second level units** with ≥1 discarded cases* | Suspected cases with adequate investigation | Suspected cases with adequate blood specimens | Percent clinically confirmed cases | Percent of outbreaks with specimens collected for virus detection |
|------|-------------------------|---|---|---|------------------------------------|---|
| 2008 | 0.8 | 29.4% | 19.1% | 47.5% | 68.2% | |
| 2009 | 1.6 | 82.4% | 10.2% | 56.3% | 55.2% | |
| 2010 | 4.3 | 94.1% | 12.7% | 67.8% | 52.7% | |
| 2011 | 3.1 | 88.2% | 47.0% | 76.3% | 48.0% | |
| 2012 | 0.7 | 29.4% | 47.6% | 82.7% | 52.4% | |

* per 100 000 population
** For Philippines, region level is used (N = 17)

| | Total no. of cases tested | Total no. of samples tested | Serology | | | | | Virus detection | | | | WHO accredited | |
|------|---------------------------|-----------------------------|--------------------------------|-----------------|-------------------|--------------|---------|-----------------|---|-----------------|-----------------------|----------------|---------|
| | | | Serum and blood | | | DBS | | Results ≤7 days | Measles virus isolation (swab, urine, PBMC) | | Measles RT-PCR | | |
| | | | Samples tested for measles IgM | Measles IgM (+) | Measles IgM equiv | No. received | No. (+) | | No. of samples tested | No. of isolates | No. of samples tested | | No. (+) |
| | | | No. | No. | No. | | | % | | | | | |
| 2010 | 7256 | 7256 | 7120 | 2830 | 250 | 0 | - | 43.9% | 0 | 0 | 0 | 0 | Yes |
| 2011 | 7620 | 7620 | 7620 | 3829 | 424 | 0 | - | 72.6% | 179 | 30 | 0 | 0 | Yes |
| 2012 | 686 | 688 | 686 | 239 | 41 | 0 | - | 96.7% | 5 | 0 | 0 | 0 | Yes |

Section 4. Immunity against measles

Reported measles cases and immunization coverage



Measles immunization schedule

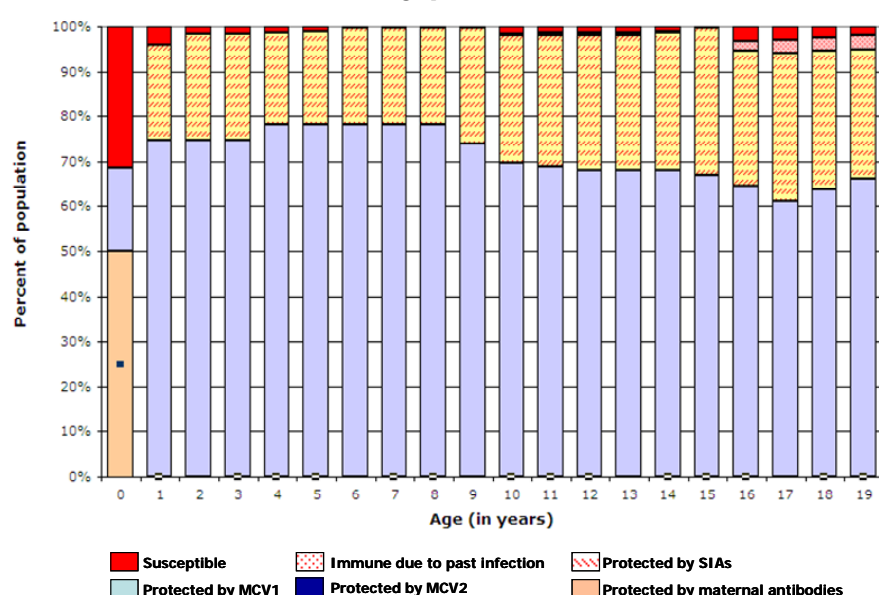
| | Year of introduction | Vaccine type | Schedule |
|------|----------------------|--------------|----------|
| MCV1 | 1982 | M | 9m |
| MCV2 | 2009 | MMR | 12m |

| | |
|---------------------------------------|----|
| School entry requirement for measles? | No |
|---------------------------------------|----|

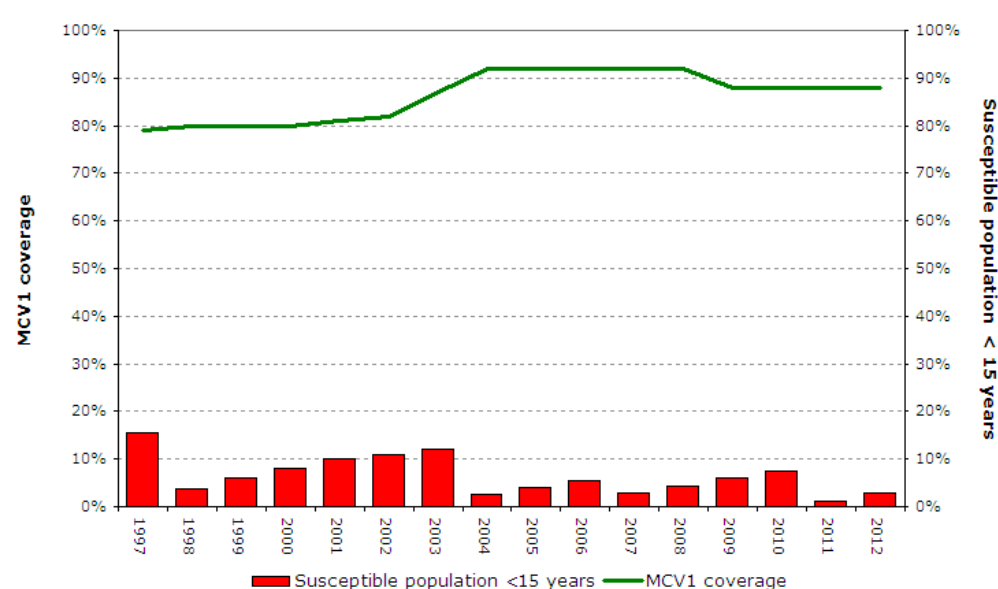
Supplementary immunization activities (SIAs)

| Year | Age | Vaccine type | No. vaccinated | Coverage |
|------|--------|--------------|----------------|----------|
| 1998 | 9m-14y | M | 22 950 000 | 85% |
| 2004 | 9m-7y | M | 17 474 136 | 95% |
| 2007 | 9-48m | M | 8 216 421 | 95% |
| 2011 | 9m-9y | MR | 15 649 907 | 84% |

Immunity profile, 2012



Percent of population susceptible to measles and MCV1 coverage



Section 5. Sustainability

| | |
|---|---------------------|
| Does country have MYP? | No |
| For what years? | |
| Are measles elimination activities included? | |
| Does country have annual workplan in 2011? | Yes |
| Are measles elimination activities included? | Yes, with line item |
| % of expenditure on vaccines used in routine immunization funded by government | |
| % of expenditure on routine immunization funded by government | |
| Does national health plan include budget for measles elimination activities through 2012? | Yes |
| Amount required through 2012 | US\$ 3.2 million |
| Amount committed by government through 2012 | US\$ 3.2 million |

Data sources:

- WHO-UNICEF Joint Reporting Forms (JRF) for Immunization
- Measles and rubella monthly country and laboratory reports to WHO — data through April 2012.
- United Nations, Department of Economic and Social Affairs, Population Division (2011). World Population Prospects: The 2010 Revision, CD-ROM Edition. (Medium-fertility variant)
- Measles Strategic Planning (MSP) Tool version 2.0
- Measles Nucleotide Surveillance (MeNS)
- Measles Laboratory Accreditation Checklist

Please visit our website:

<http://www.wpro.who.int/entity/immunization>

Please send your comments to:

WPR_EPIdata@wpro.who.int